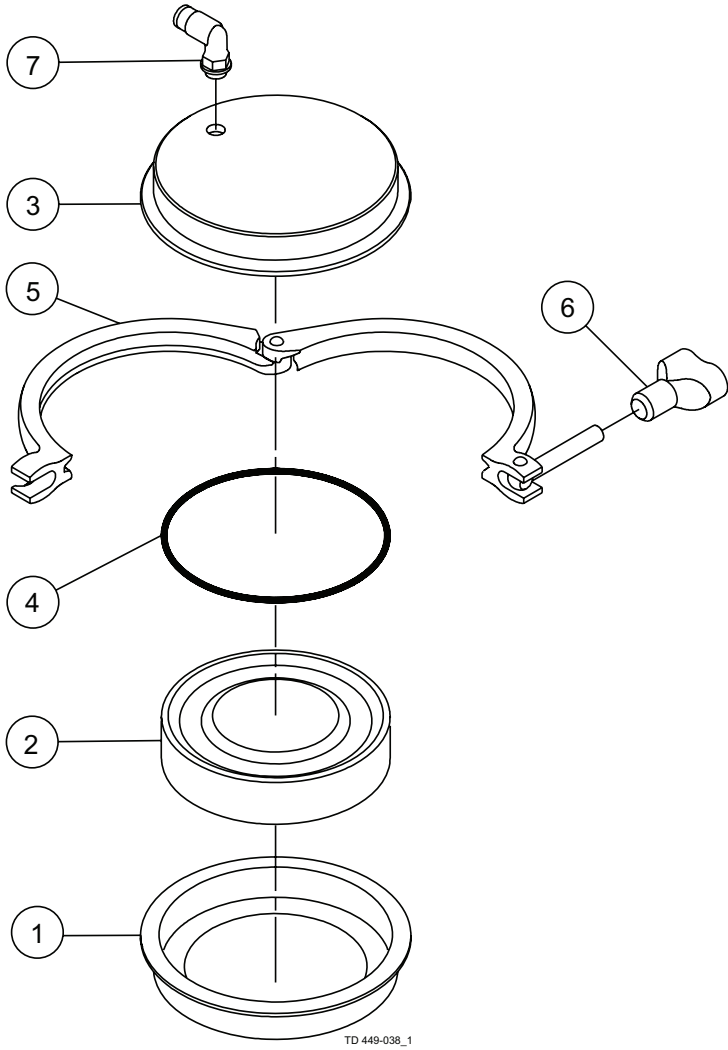
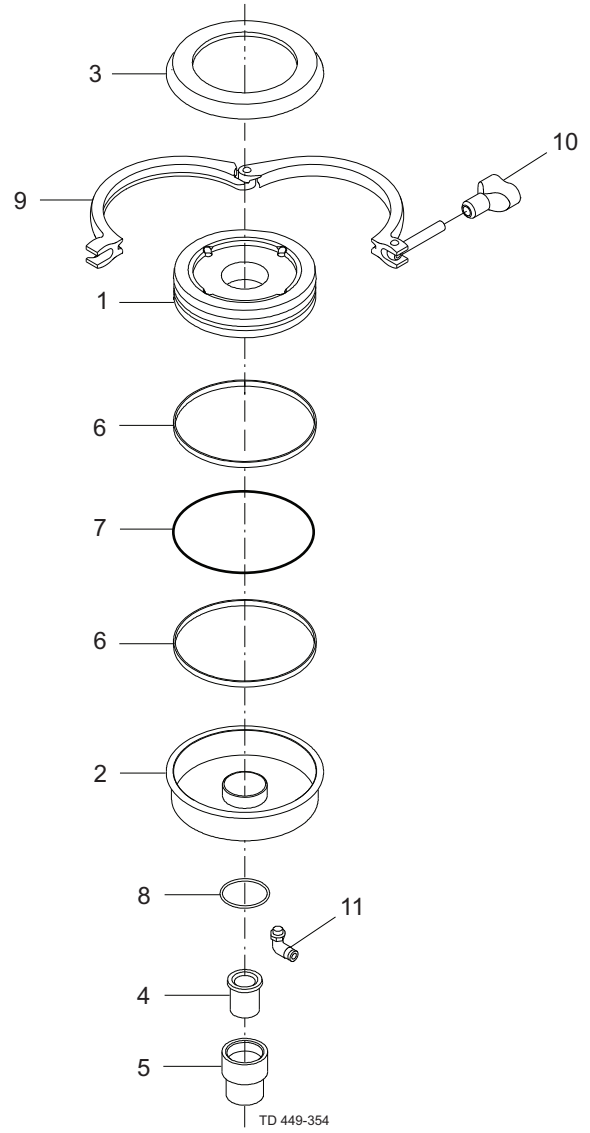


Axial installation tool



Radial installation tool



Unique Mixproof installation tools

	Seat size				
Unique Mixproof, Unique Mixproof CP3 and Unique Mixproof 3-body	Seat 53.3 1.5" + 2"	Seat 81.3 2.5" + 3"	Seat 100.3 4"	Seat 115.3 6"	
Axial installation tool	9613050501	9613050502	9613050508	***9613050503	
Radial installation tool	9613426001	9613426002	9613426003	***9613426004	
Mounting tool for lip seal	8010017878				
Unique-TO	Seat 53.3	Seat 81.3	Seat 100.3	Seat 115.3	
Axial installation tool	9613050501	9613050502	9613050508	9613050503	
Radial installation tool	9613426001	9613426002	9613426003	9613426004	
Mounting tool for lip seal**	9613004001				
Mounting tool for lip seal*	8010006489	8010001579	8010001584	8010001591	
Unique LP and LP-F, PMO Curd and Curd CP Mixproof				Seat 143.9	Seat 206.1
Axial installation tool				9613050507	9613050510
Radial installation tool				9613426009	9613426010
Unique PMO, PMO-F, PMO Plus and PMO Plus CP	Seat 53.3 1.5"	Seat 81.3 2"	Seat 115.3 2.5" + 3"	Seat 143.9 4"	Seat 206.1 6"
Axial installation tool	9613050501	9613050502	9613050503	9613050507	9613050510
Radial installation tool	9613426001	9613426002	9613426004	9613426009	9613426010
Unique PMO Plus CP, HT		Seat 81.3 2.5"	Seat 81.3 3"	Seat 115.3 4"	Seat 206.1 6"
Axial installation tool		9613050502	9614079201	9613050503	9613050510
Radial installation tool		9614078801	9614078801	9614078802	9614078803
Unique PMO Plus CP, VT		Seat 81.3 2"+2.5"	Seat 81.3 3"	Seat 115.3 4"	
Axial installation tool		9613050502	9614079201	9613050503	
Radial installation tool		9614078801	9614078801	9614078802	

Note!

*) = Period 1702-->

***) = Period <-- 1702

***)) Not applicable for Unique Mixproof CP3 and Unique Mixproof 3-body.