

Alfa Laval MultiJet 25

Rotary jet heads

Introduction

The Alfa Laval MultiJet 25 is a rotary jet head tank cleaning machine for use in industrial environments. Built to clean tanks with capacities from 15 and 150 m³, it combines pressure and flow to create high-impact cleaning jets rotate in a repeatable and reliable 360-degree cleaning pattern.

The MultiJet 25 minimizes the consumption of water and cleaning media. Easy to customize to meet customer requirements, it allows companies to spend less time cleaning and more time producing.

Application

The Alfa Laval MultiJet 25 is designed for the removal of the toughest residues from industrial tanks across a broad range of industries, such as the home care, chemical, pulp and paper, ethanol, starch, and oil industries.

Benefits

- 60% faster cleaning = more time for production
- Saves up to 70% of your cleaning cost
- Eliminates the need for confined space entry for manual tank cleaning
- High-impact cleaning in a 360° repeatable cleaning pattern
- Cleaning process can be validated using Alfa Laval Rotacheck

Standard Design

The choice of nozzle diameters can optimize jet impact length and flow rate at the desired pressure. A 2.1 material certificate and an ATEX certification are available.

Alfa Laval offers a wide range of tank cleaning machines suitable for different duties and industries. An alternative that offers performance similar to the Alfa Laval MultiJet 25 is the Alfa Laval GJ PF, which is ideal applications that require a small tank inlet opening.

Certificates

2.1 material certificate and ATEX.

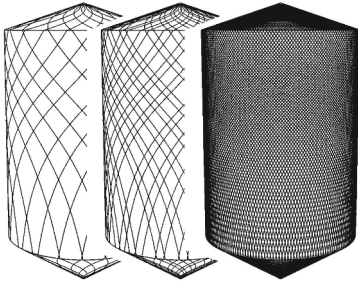


Working principle

The high-impact jet stream from the rotary jet head covers the entire surface 360° of the tank interior in a successively denser pattern. This achieves a powerful mechanical impact with a low volume of water and cleaning media.

The flow of the cleaning fluid makes the nozzles perform a geared rotation around the vertical and horizontal axes. In the first cycle, the nozzles lay out a course pattern on the tank surface. The subsequent cycles gradually make the pattern denser until at full cleaning pattern is reached.

Once the full cleaning pattern is reached, the machine will start over again and continue to perform the next full cleaning pattern.



TECHNICAL DATA

Lubricant:	Self-lubricating with the cleaning fluid
Max. throw length:	9 - 14 m
Impact throw length:	4 - 8 m

Pressure

Working pressure:	3 - 8 bar
Recommended pressure:	5 - 6.5 bar

PHYSICAL DATA

Materials

316L (UNS S31603), Duplex steel (UNS N31803), Duplex steel (UNS S 21800), EPDM¹, PEEK¹, PVDF¹, PFA¹

¹ FDA compliance 21CFR§177

Surface finish:	Exterior finish: Glass blasted
-----------------	--------------------------------

Temperature

Max. working temperature:	95 °C
Max. ambient temperature:	140 °C

Weight:	5.1 kg
---------	--------

Connections

Standard female thread:	1" Rp (BSP) or NPT
-------------------------	--------------------

Caution

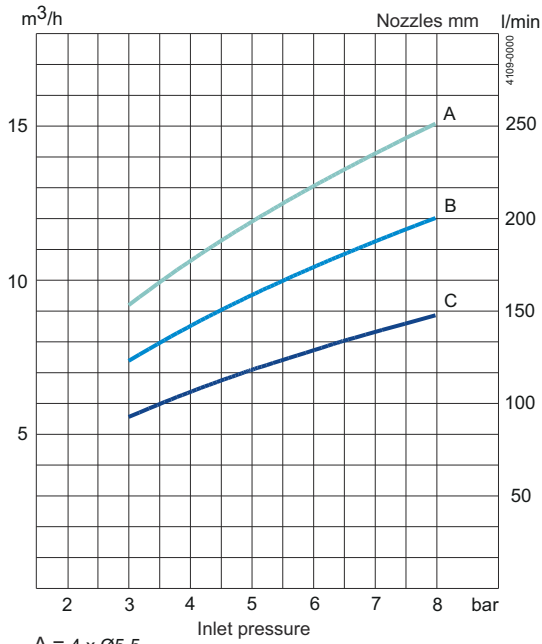
Avoid hydraulic shock, hard and abrasive particles in the cleaning liquid, as this can cause increased wear and/or damage of internal mechanisms. In general, a filter in the supply line is recommended. Do not use for gas evacuation or air dispersion. For steaming we refer to the manual.

Qualification Documentation

Documentation specification

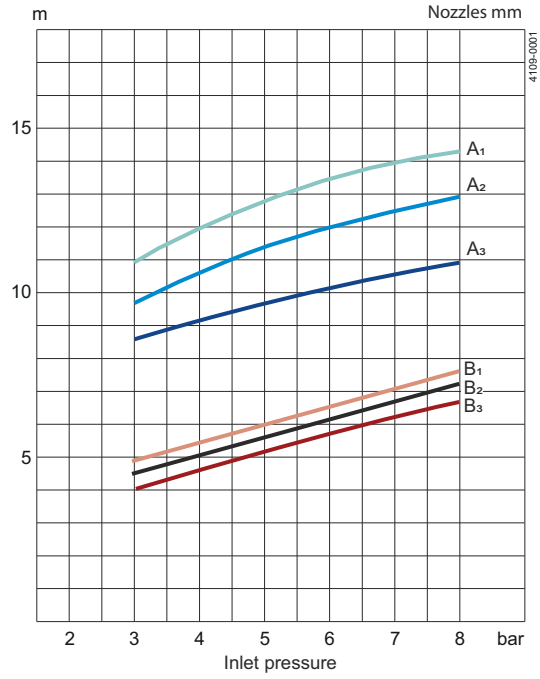
ATEX	ATEX approved machine for use in explosive atmospheres Category 1 for installation in zone 0/20 in accordance with Directive 2014/34/EU II 1G Ex h IIC 85 °C ... 175 °C Ga II 1D Ex h IIC T85 °C ... T140 °C Da
------	--

Flow rate



- A = 4 x Ø5.5
- B = 4 x Ø4.6
- C = 4 x Ø3.9

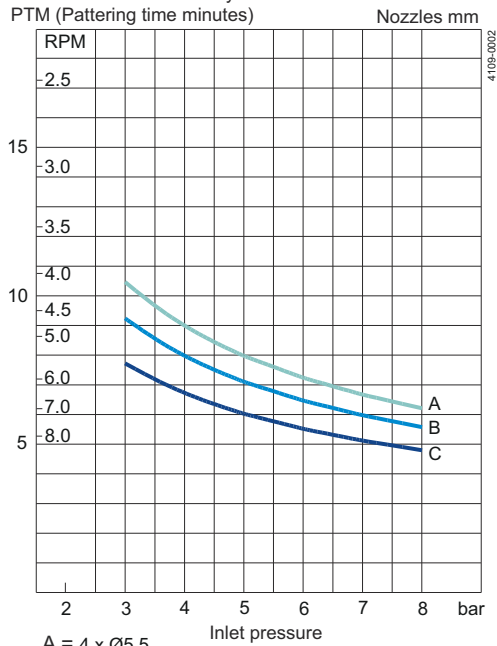
Impact throw length



- A: Wetting B: Impact cleaning
- A₁ = 4 x Ø5.5 B₁ = 4 x Ø5.5
- A₂ = 4 x Ø4.6 B₂ = 4 x Ø4.6
- A₃ = 4 x Ø3.9 B₃ = 4 x Ø3.9

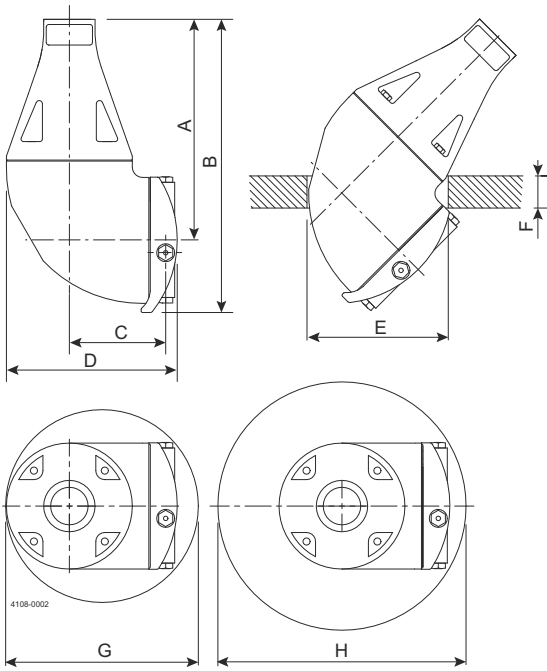
Cleaning time, complete pattern

Min. RPM of machine body
PTM (Pattering time minutes)



- A = 4 x Ø5.5
- B = 4 x Ø4.6
- C = 4 x Ø3.9

Dimensions (mm)



A	B	C	D	E	F	G	H
173	230	75	133	Ø110	Max. 25	Ø150	Ø200

This document and its contents are subject to copyrights and other intellectual property rights owned by Alfa Laval AB (publ) or any of its affiliates (jointly "Alfa Laval"). No part of this document may be copied, re-produced or transmitted in any form or by any means, or for any purpose, without Alfa Laval's prior express written permission. Information and services provided in this document are made as a benefit and service to the user, and no representations or warranties are made about the accuracy or suitability of this information and these services for any purpose. All rights are reserved.

How to contact Alfa Laval

Up-to-date Alfa Laval contact details for all countries are always available on our website at www.alfalaval.com