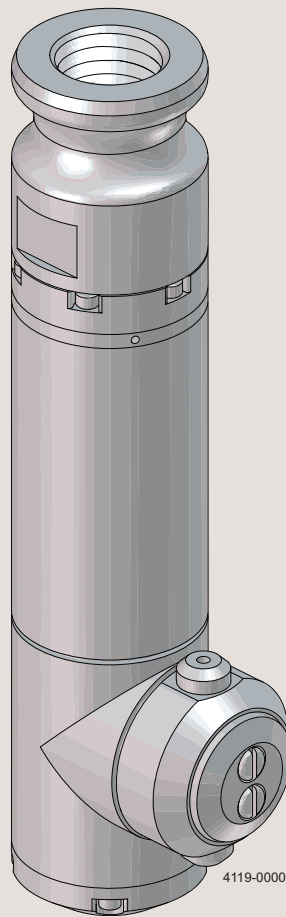




Spare Parts

Alfa Laval GJ 9

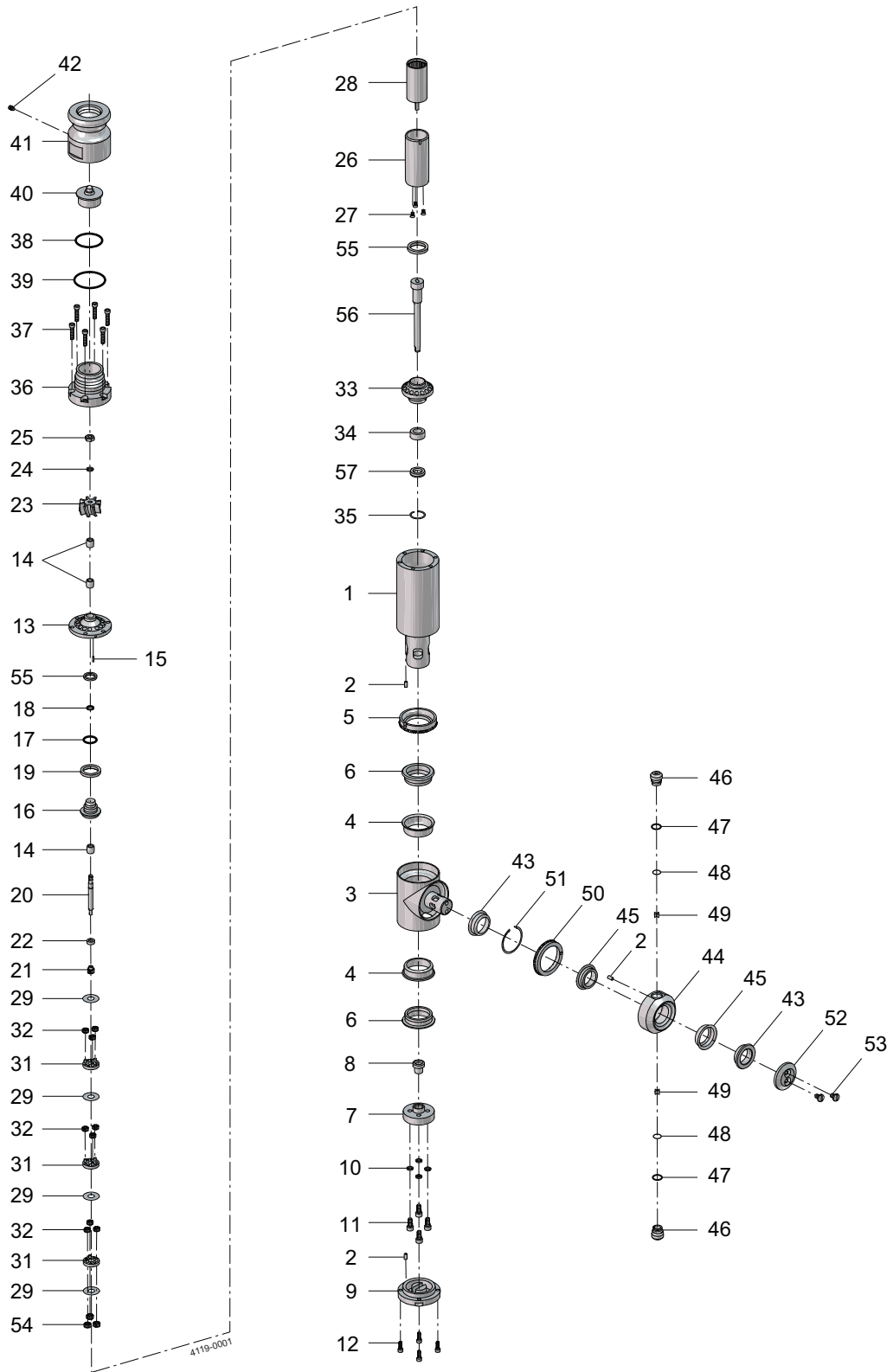


ESE03406-EN1 2017-01

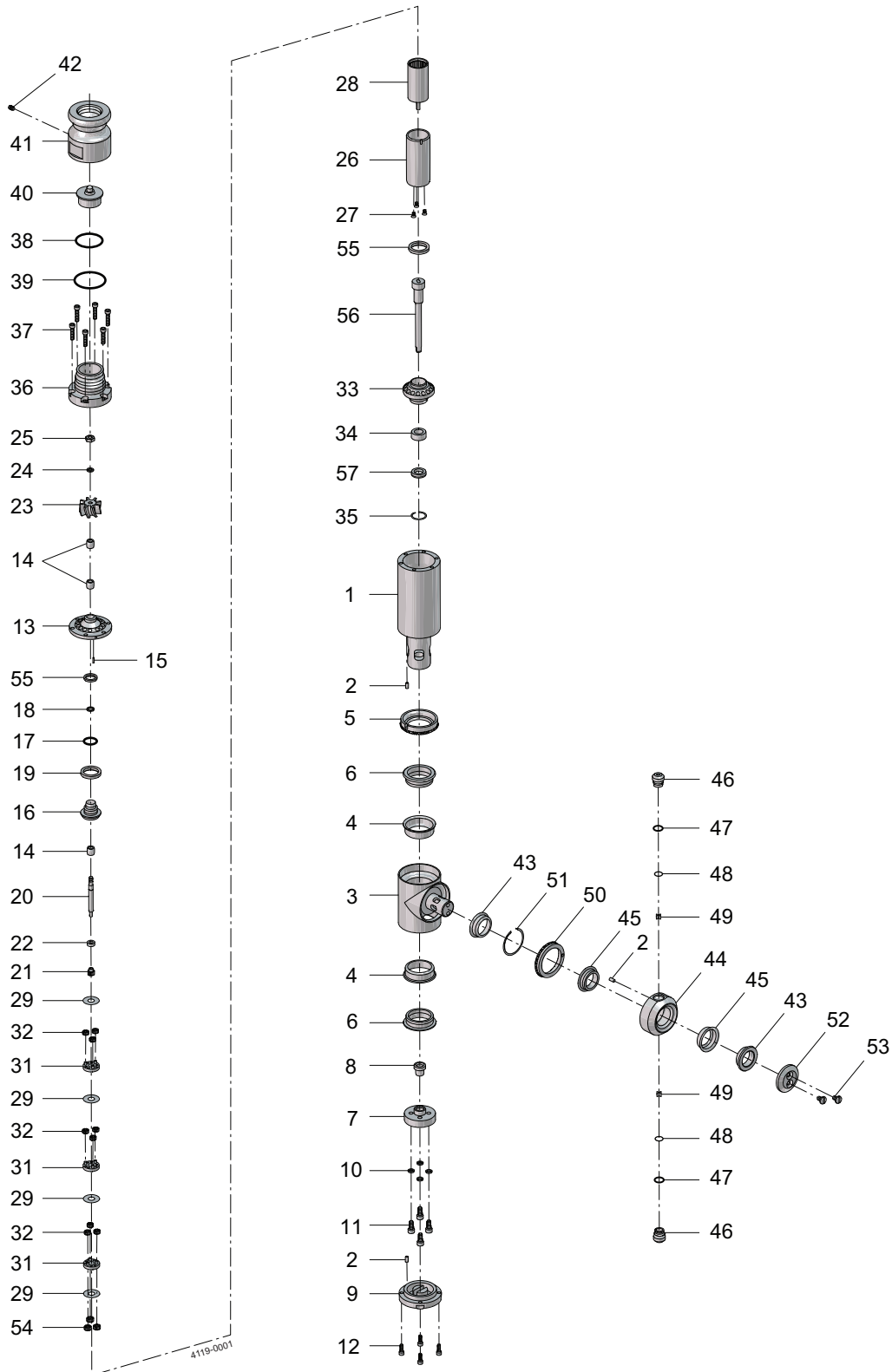
Original manual

The information herein is correct at the time of issue but may be subject to change without prior notice

1. Alfa Laval GJ 9 4



Pos	Qty	Denomination	Item no.	Gamajet no.
1	1	Stem	9614613401	9-103-Etching
2	3	Drive pin	9614611101	E-866
3	1	Tee housing	9614613501	9-104
4	□○◆	2 Tee housing cup	9614616501	9-132
5	1	Tee housing bevel gear	9614614901	9-117
6	□◆○★▲◆	2 Tee housing bearing	9614616401	9-131
7	1	Stem base	9614616301	9-130
8	□◆○★▲◆	1 Output shaft lower carbide bearing	9614617601	9-146
9	1	Tee housing base	9614614601	9-114
10	4	Stem base screw lock washer	9614617701	9-147
11	4	Stem base screw	9614616801	9-137
12	□◆○★▲◆	4 Tee housing base screw	9614615701	9-126
13	1	Input shaft upper bearing housing	9614616001	9-128
14	3	Carbide bearing	9614678601	8-548
15	1	Planetary gearhead pin	9614625601	6-143
16	1	Input shaft lower bearing housing	9614615801	9-127
17.1○▲	1	Input shaft housing seal, Viton	9614661901	642-V
17.2□◆	1	Input shaft housing seal, EPDM	9614661902	642-E
17.3★◆	1	Input shaft housing seal, Kalrez	9614661903	642-K
18	1	Input shaft seal	9614611201	E-867
19	1	Input shaft lower housing seal	9614614801	9-116
20	1	Input shaft	9614615301	9-122
21	1	Input pinion	9614614301	9-111
22	1	Input pinion washer	9614615601	9-124
23	1	Impeller	9614614101	9-110
24	1	Impeller, lock washer	9614678201	8-544
25	1	Impeller, nut	9614678301	8-545
26	1	Gear box	9614613201	9-101
27	3	Planetary gearhead screw	9614617001	9-139
28	□○◆	1 Planetary gearhead	9614614501	9-113-A
29	4	Planetary gearhead components		
30	2	Gearhead carrier		
31	1	Gearhead carrier		
32	9	Planetary gears		
33	1	Gearhead lower bearing housing	9614616201	9-129
34	□◆○★▲◆	1 Output shaft upper carbide bearing	9614617501	9-145
35	1	Snap ring	9614615501	9-123
36	1	Cap	9614613301	9-102
37	6	Input cap screw	9614616901	9-138
38.1○▲	1	Collar large O-ring, Viton	9614617301	9-142-V
38.2□◆	1	Collar large O-ring, EPDM	9614617302	9-142-E
38.3★◆	1	Collar large O-ring, Kalrez	9614617303	9-142-K
39.1○▲	1	Collar small O-ring, Viton	9614617201	9-141-V
39.2□◆	1	Collar small O-ring, EPDM	9614617202	9-141-E
39.3★◆	1	Collar small O-ring, Kalrez	9614617203	9-141-K
40.1	1	Guide, standard	9614614005	9-109-STD
40.2	1	Guide, medium volume	9614614008	9-109-MV
40.3	1	Guide, high volume	9614614009	9-109-HV
40.4	1	Guide, low volume	9614614007	9-109-LV
40.5	1	Guide, low profile	9614614006	9-109-LP
41	1	Inlet collar	9614613901	9-108
42	1	Collar set screw	9614617101	9-140
43	□◆○★▲◆	2 Nozzle housing bearing	9614616601	9-133
44	1	Dual nozzle housing	9614613601	9-105-D
45	□○◆	2 Nozzle housing cup	9614616701	9-134
46.1	2	Nozzle assembly, EPDM - 0.125"	9614620901	6-107-ASE.125
46.2	2	Nozzle assembly, EPDM - 0.135	9614699301	6-107-ASE.135
46.3	2	Nozzle assembly, EPDM - 0.150"	9614620902	6-107-ASE.150
46.4	2	Nozzle assembly, EPDM - 0.165	9614620903	6-107-ASE.165
46.5	2	Nozzle assembly, EPDM - 0.200"	9614699302	6-107-ASE.200
46.6	2	Nozzle assembly, EPDM - 0.225"	9614620905	6-107-ASE.225
46.7	2	Nozzle assembly, Viton - 0.125"	9614621001	6-107-ASV.125
46.8	2	Nozzle assembly, Viton - 0.135"	9614699401	6-107-ASV.135
46.9	2	Nozzle assembly, Viton - 0.150"	9614621002	6-107-ASV.150
46.1	2	Nozzle assembly, Viton - 0.165"	9614621003	6-107-ASV.165
46.11	2	Nozzle assembly, Viton - 0.200"	9614699402	6-107-ASV.200
46.12	2	Nozzle assembly, Viton - 0.225"	9614621005	6-107-ASV.225
46.13	2	Nozzle assembly, Kalrez - 0.125"	9614621101	6-107-ASK.125
46.14	2	Nozzle assembly, Kalrez - 0.135"	9614699501	6-107-ASK.135
46.15	2	Nozzle assembly, Kalrez - 0.150"	9614621102	6-107-ASK.150
46.16	2	Nozzle assembly, Kalrez - 0.165"	9614621103	6-107-ASK.165
46.17	2	Nozzle assembly, Kalrez - 0.200"	9614699502	6-107-ASK.200
46.18	2	Nozzle assembly, Kalrez - 0.225	9614621105	6-107-ASK.225
47.1○▲	2	Nozzle outer O-ring, Viton	9614627104	6-155-V
47.2□◆	2	Nozzle outer O-ring, EPDM	9614627102	6-155-E
47.3★◆	2	Nozzle outer O-ring, Kalrez	9614627103	6-155-K
48.1○▲	2	Nozzle inner O-ring, Viton	9614686703	7-753-V
48.2□◆	2	Nozzle inner O-ring, EPDM	9614686701	7-753-E
48.3★◆	2	Nozzle inner O-ring, Kalrez	9614686702	7-753-K
49	2	Nozzle vanes	9614678701	8-549



Pos	Qty	Denomination	Item no.	Gamajet no.
50	1	Nozzle housing bevel gear	9614615001	9-118
51	1	Nozzle carrier bevel gear snap ring	9614615101	9-119
52	1	Name plate	9614613801	9-106
53	2	Name plate screw	9614678501	8-547
54	3	Planetary gearhead gears	9614617801	9-148
55	□♦○★▲❖ 2	Static seal: planetary gearhead	9614614701	9-115
56	□○❖ 1	Output shaft	9614614401	9-112
57	□♦○★▲❖ 1	Gearhead lower housing seal	9614615201	9-120
			Item no.	Gamajet no.
Minor service kits				
♦		EPDM	9614618201	9MINEPDMKIT
▲		Viton (FKM)	9614618601	9MINVITONKIT
★		Kalrez (FFKM)	9614618401	9MINKALREZKIT
Major service kits				
□		EPDM	9614618301	9MAJEPDMKIT
○		Viton (FKM)	9614618701	9MAJVITONKIT
❖		Kalrez (FFKM)	9614618501	9MA- JKALREZKIT

Parts marked with □♦○★▲❖ are included in the service kits.

How to contact Alfa Laval

Contact details for all countries are continually updated on our website.

Please visit www.alfalaval.com to access the information directly.

© Alfa Laval Corporate AB

This document and its contents is owned by Alfa Laval Corporate AB and protected by laws governing intellectual property and thereto related rights. It is the responsibility of the user of this document to comply with all applicable intellectual property laws. Without limiting any rights related to this document, no part of this document may be copied, reproduced or transmitted in any form or by any means (electronic, mechanical, photocopying, recording, or otherwise), or for any purpose, without the expressed permission of Alfa Laval Corporate AB. Alfa Laval Corporate AB will enforce its rights related to this document to the fullest extent of the law, including the seeking of criminal prosecution.